

TASCAM

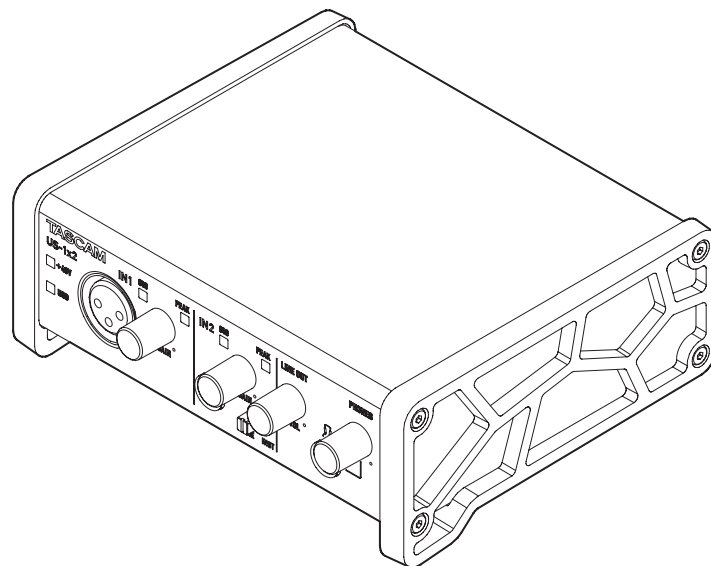
D01321920A

US-1x2

USB Audio Interface



REFERENCE MANUAL



Before connecting this unit to a computer, you must download and install dedicated software on the computer.

Contents

1 – Introduction	3	Supported audio drivers.....	23
Features	3	General	23
Conventions used in this manual.....	3	Dimensional drawings.....	23
Trademarks and copyrights	3		
2 – Names and functions of parts	4		
Front panel.....	4		
Rear panel.....	4		
3 – Installation	5		
System requirements	5		
Windows.....	5		
Mac OS X	5		
Apple iOS devices	5		
Supported audio drivers.....	5		
Installing the dedicated software	5		
Installing the Windows dedicated software	5		
Installing the Mac dedicated software	6		
Working with Gatekeeper	7		
Uninstalling the dedicated software	8		
Uninstalling the Windows dedicated software	8		
Uninstalling the Mac dedicated software	8		
4 – Preparation.....	9		
Connecting the power.....	9		
When using a computer (Windows/Mac).....	9		
When using an iOS device	9		
Connecting other equipment	9		
Connecting with a computer.....	9		
Connecting with iOS devices.....	10		
Audio connections.....	10		
Adjusting the monitoring balance	11		
5 – Using the Settings Panel	12		
Opening the Settings Panel	12		
Windows.....	12		
Mac.....	12		
Windows Settings Panel overview	12		
Home page.....	12		
Settings page.....	13		
Custom page.....	14		
Mac Settings Panel overview.....	15		
Notification function	16		
Automatic Settings Panel and firmware update function	16		
6 – Application Guide	17		
DAW software.....	17		
Bundled DAW software	17		
Other DAW software	17		
Driver settings for specific purposes (Windows only).....	17		
Windows Media Player.....	17		
Mac OS X and iTunes	18		
7 – Standalone Mode.....	19		
Overview.....	19		
Settings in standalone mode	19		
Settings Panel settings	19		
8 – Troubleshooting.....	20		
9 – Specifications	22		
Audio resolution.....	22		
Input/output ratings.....	22		
Analog inputs	22		
Analog audio output ratings.....	22		
Control input/output ratings	22		
Audio performance.....	22		
Computer system requirements	23		
Windows.....	23		
Mac.....	23		
Apple iOS devices	23		

Features

- 24-bit/96kHz audio interface
- Two analog signals (**IN1/IN2**) can be input simultaneously and output to a computer by USB at the same time
- XLR mic (balanced, XLR-3-31 equivalent) and standard TRS jack (balanced *1/unbalanced *2) inputs
- Electric guitars and basses, for example, can be connected to the IN2 standard TRS jack input when the **LINE/INST** switch is set to **INST** (instrument input)
- RCA stereo line and headphone outputs
- Direct monitoring function allows input monitoring with low latency
- USB port (USB-B type, USB 2.0 standard)
Use the included USB cable to connect the unit to a computer. To connect to an iOS device, use a Lightning to USB Camera Adapter made by Apple Inc.

CAUTION

When used while connected to a computer by USB, it will operate using USB bus power.

When connected to an iOS device by USB, however, power must be supplied. Purchase a separate external power supply device for this purpose.

- Software mixer function convenient for live broadcasting and karaoke (for Windows)
- DAW software included

*1 standard 6.3mm (1/4") TRS jack (**LINE/INST** switch set to **LINE**)

*2 standard 6.3mm (1/4") TS jack (**LINE/INST** switch set to **INST**)

Note about computer operation

If you are unsure about anything related to the basic operation of a computer when it is mentioned in an explanation in this manual, please refer to the computer operation manual.

To use this unit with a computer, dedicated software must be installed on the computer.

For details about software installation, see "Installing the dedicated software" on page 5

Conventions used in this manual

In this manual, we use the following conventions:

- Buttons, connectors and other physical parts of this unit are written using a bold font like this: **PHONES** knob.
- Information shown on a computer display is written like this: "OK".
- Additional information is provided as necessary as tips, notes and cautions.

TIP

These are tips about how to use the unit.

NOTE

These provide additional explanations and describe special cases.

CAUTION

Failure to follow these instructions could result in injury, damage to equipment or lost recording data, for example.

Trademarks and copyrights

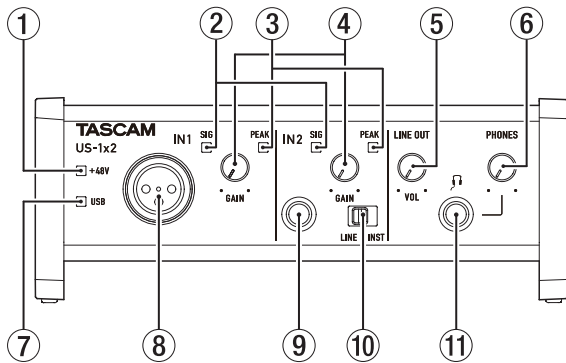
- TASCAM is a trademark of TEAC CORPORATION, registered in the U.S. and other countries.
- Microsoft, Windows and Windows Vista are either registered trademarks or trademarks of Microsoft Corporation in the United States and/or other countries.
- Apple, Mac, Mac OS, macOS, iPad, iPod, iPod touch, Lightning, App Store and iTunes are trademarks of Apple Inc.
- IOS is a trademark or registered trademark of Cisco in the U.S. and other countries and is used under license.
- ASIO is a trademark of Steinberg Media Technologies GmbH.



- Other company names, product names and logos in this document are the trademarks or registered trademarks of their respective owners.

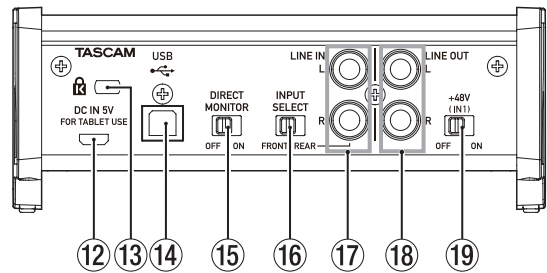
2 – Names and functions of parts

Front panel



- ① **PHANTOM indicator**
The indicator lights when the phantom power switch (19) of the rear panel is set to **ON**.
 - ② **SIG indicators**
The SIG indicators light green when signals (of at least -32 dBFS) are input through the **IN1/IN2/LINE IN L-R** jacks (8/9/17).
 - ③ **PEAK indicators**
The **PEAK** indicators light red when signals that are about to distort (-1 dBFS or higher) are input through the **IN1/IN2/LINE IN L-R** jacks (8/9/17).
 - ④ **GAIN knobs**
Use to adjust the input levels of the **IN1/IN2** jacks (8/9).
 - ⑤ **LINE OUT knob**
Use to adjust the output level of the **LINE OUT L-R** jacks (18).
 - ⑥ **PHONES knob**
Use to adjust the output level of the **PHONES** jack (11).
- CAUTION**
- Before connecting headphones, minimize the volume with the **PHONES** knob. Failure to do so might cause sudden loud noises, which could harm your hearing or result in other trouble.
- ⑦ **USB indicator**
This lights when the USB connection is working.
 - ⑧ **IN1 jack**
This mic level XLR jack is balanced input jack.
 - ⑨ **IN2 jack**
This input jack is standard TRS jack.
Use the **LINE/INST** switch (10) on the front of the unit to enable balanced line (**LINE**) input or unbalanced (**INST**) input for the standard TRS jacks.
 - ⑩ **LINE/INST switch**
Set according to the **IN2** jack (9) input sources.
Set to **LINE** when connecting electronic instruments, audio devices and similar equipment. Set to **INST** when connecting an electric guitar, electric bass or other equipment with high output impedance.
 - ⑪ **PHONES jack**
Use this standard stereo phone jack to connect stereo headphones. This jack outputs the same signal of the rear panel as the **LINE OUT L-R** jacks (18).
Use an adapter to connect headphones with a mini plug.

Rear panel



- ⑫ **DC IN 5V connector (Micro USB type)**
When connected to an iOS device or other equipment that cannot power this unit, you must use a USB power adapter, mobile battery or other power supply. See “When using an iOS device” on page 9 for details.
- ⑬ **Kensington Security Slot**
- ⑭ **USB port (USB-B type)**
Use the included USB cable to connect the unit to a computer or an iOS device. (Supports USB 2.0)
- ⑮ **DIRECT MONITOR switch**
Set this to **ON** when you want to monitor the input source directly.
When set to **ON**, you will be able to set the input source volume (Low/Mid/High) using the Settings Panel application described below. See “Adjusting the monitoring balance” on page 11 for details.
- ⑯ **INPUT SELECT switch**
Set according to the input sources.
Set to **FRONT** when connecting to **IN1/IN2** jacks (8/9) of the front panel. Set to **REAR** when connecting to **LINE IN L-R** jacks (17) of the rear panel.
- ⑰ **LINE IN L-R jacks**
These RCA pin jacks are analog line inputs.
- ⑱ **LINE OUT L-R jacks**
These RCA pin jacks are analog line outputs.
- ⑲ **Phantom power switch**
Use this switch to provide **+48V** phantom power to the **IN1** jack (8).

System requirements

Check the TEAC Global Site (<http://teac-global.com/>) for the latest information about supported operating systems.

Windows

Supported operating systems

Windows 10 32-bit
Windows 10 64-bit
Windows 8.1 32-bit
Windows 8.1 64-bit
Windows 7 32-bit SP1 or later
Windows 7 64-bit SP1 or later
(Windows 8, Windows Vista and Windows XP are not supported)

Computer hardware requirements

Windows computer with a USB 2.0 port

CPU/processor speed

2 GHz or faster dual core processor (x86)

Memory

2 GB or more

CAUTION

Operation of this unit was confirmed using standard computers that meet the above requirements. This does not guarantee operation with all computers that meet the above requirements. Even computers that meet the same system requirements might have processing capabilities that differ according to their settings and other operating conditions.

Mac OS X

Supported operating systems

macOS Sierra (10.12 or later)
OS X El Capitan (10.11 or later)
OS X Yosemite (10.10 or later)

Computer hardware requirements

Mac with a USB 2.0 port

CPU/processor speed

2 GHz or faster dual core processor

Memory

2 GB or more

Apple iOS devices

Supported operating systems

Apple iOS device running iOS 7 or later

Supported audio drivers

Windows: ASIO2.0, WDM
Mac: Core Audio
iOS device: Core Audio for iPhone

Installing the dedicated software

To use this unit, a dedicated software must be installed on a computer.

Download the latest dedicated software for the operating system you are using from the TEAC Global Site (<http://teac-global.com/>).

- On a Windows computer, this will install the Windows driver and Settings Panel application.
- Installing the dedicated software on a Mac will install only the Mac Settings Panel application. The standard OS driver will be used.
- With an iOS device, the standard OS driver will be used, so there is no need to install any.

CAUTION

Before starting to install software, quit other applications.

Installing the Windows dedicated software

Follow the procedures below to install the Windows dedicated software.

CAUTION

- Complete installation of the Windows dedicated software on the computer before connecting the unit to it with the USB cable.
- If you already connected the unit to the computer using the USB cable before installing the Windows software and the Found New Hardware Wizard launched, close the message and disconnect the USB cable.

Windows software installation procedures

1. Download the latest Windows dedicated software for the operating system you are using from the TEAC Global Site (<http://teac-global.com/>) and save it on the computer to be used with the unit.
2. Uncompress the saved software (zip file) on the computer desktop or another location.
3. Double-click the "*TASCAM_US-1x2_Installer_x.xx.exe*" file in the folder that appears after uncompression to automatically launch the installation software.

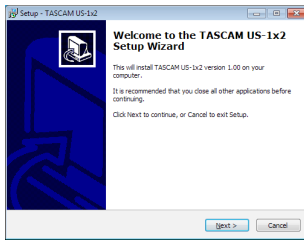
CAUTION

If you open a zip file without decompressing it and double-click the "*TASCAM_US-1x2_Installer_x.xx.exe*" file in the folder that opens, installation will not start. Right-click the zip file and select "*Extract All*", for example, to decompress it and then try again.

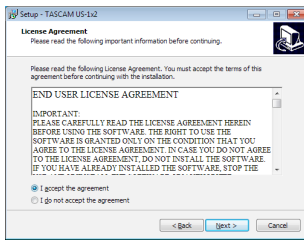
4. When a "*Security Warning*" or "*User Account Control*" screen appears, click the "*Yes*" button.

3 – Installation

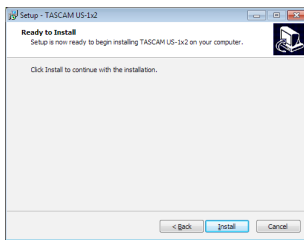
5. When the Install Shield Wizard screen appears, click the **“Next”** button.



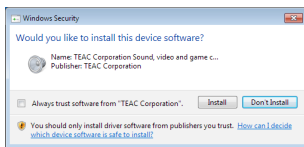
6. Read the contents of the License Agreement, and select **“I accept the agreement”** if you agree to the terms. Then, click the **“Next”** button.



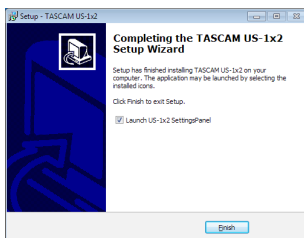
7. Next, click the **“Install”** button.



8. Start installation.



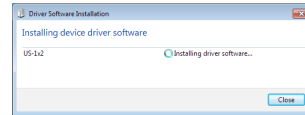
9. The following screen appears when installation has completed. Click the **“Finish”** button.



This quits the installer and launches the Windows Settings Panel.

NOTE

The first time you connect the unit by USB to the computer after installing the software, installation of the device driver will be executed. Some time might be necessary before the unit is recognized because Windows Update will be automatically searched at this time. If the unit is still not recognized after a while, open the software installation screen from the notification area at the bottom right of the computer display, and click **“Skip obtaining driver software from Windows Update”** to stop the search.



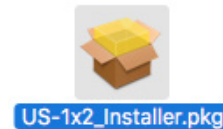
Installing the Mac dedicated software

NOTE

- Install the Mac dedicated software on the computer before connecting the unit to it with the USB cable.
- Depending on the Gatekeeper setting, a warning message might appear during installation. See “Working with Gatekeeper” on page 7 for information about Gatekeeper.

Mac dedicated software installation procedures

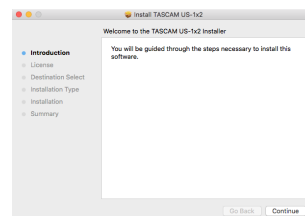
1. Download the latest Mac dedicated software for the operating system you are using from the TEAC Global Site (<http://teac-global.com/>) and save it on the computer to be used with the unit.
2. Double-click **“TASCAM_US-1x2_Installer_x.xx.dmg”**, which is the saved disk image file for the Mac dedicated software, and double-click **“US-1x2_Installer.pkg”** inside the folder that opens.



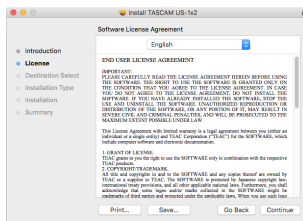
NOTE

Depending on the computer’s settings, the downloaded zip file might not have been uncompressed automatically. In this case, unzip the zip file first and then double-click the disk image file.

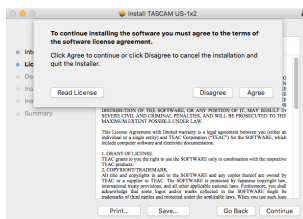
3. When the installer starts, click the **“Continue”** button.



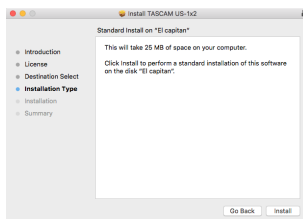
- Next, select the desired language and click the *“Continue”* button.



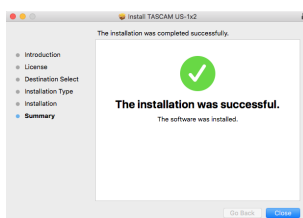
- Click the *“Read License”* button and check the contents of the Software License Agreement. you agree to the contents, click *“Agree”*.



- Next, click the *“Install”* button to start installation.



- The following screen appears when installation has completed. Click the *“Close”* button.



Working with Gatekeeper

When using Mac OS X, depending on the Gatekeeper security function setting, a warning message might appear during installation.

The solution depends on the warning message shown. See the following explanations for details.

When the Gatekeeper setting is *“Allow applications downloaded from: the Mac App Store”*

The following security warning might be shown: *“US-1x2_Installer.pkg” can’t be opened because it was not downloaded from the Mac App Store.”*



In this case, click the *“OK”* button to close the message. Then, control-click (or right-click) the file and click *“Open”*.

The following security warning might be shown: *“US-1x2_Installer.pkg” it not from the Mac App Store. Are you sure you want to open it?”*



This warning message might also appear when the Gatekeeper setting is something other than *“Allow applications downloaded from: the Mac App Store”*.

The following security warning might be shown: *“US-1x2_Installer.pkg” can’t be opened because it was not downloaded from the Mac App Store.”*

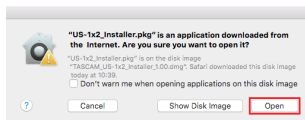


In this case, copy the file from the folder where it is to the desktop or another folder, and then open it. Alternatively, change the Gatekeeper settings to *“Allow applications downloaded from: the Mac App Store and identified developers”* and try opening it again.

3 – Installation

When the Gatekeeper setting is not “Allow applications downloaded from: the Mac App Store”

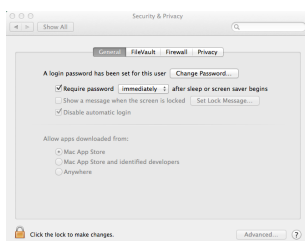
“US-1x2_Installer.pkg” is an application downloaded from the Internet. Are you sure you want to open it?” might appear as a security warning message. In this case, click the “Open” button.



Changing the Gatekeeper setting

The Gatekeeper setting can be changed using the “Allow applications downloaded from:” item on the “General” page of the “Security & Privacy” pane of the System Preferences.

To change this, you must click the lock icon (🔒) at the bottom left and enter a password to unlock the settings.



This setting will lock again when you click the 🔒 button or type command-Q to close the System Preferences or when you click “Show All” to close the open pane.

CAUTION

Changing the Gatekeeper setting could result in security risks.

If you changed the Gatekeeper setting to decrease security (use one of the lower settings), set it back to the original setting after updating the software and/or firmware. (When installing a firmware update immediately after software, do this after installing the firmware update.)

Uninstalling the dedicated software

NOTE

Normally, there is no need to uninstall the dedicated software. Follow these procedures if a problem occurs or you no longer intend to use the unit with the computer.

Uninstalling the Windows dedicated software

Uninstalling from the Programs and Features Control Panel

1. From the Start menu, open the Control Panel and launch Programs and Features.

NOTE

- In Windows 10, right-click the Start button and click Control Panel when it appears.
 - In Windows 8.1, right-click the button at the bottom left of the Start screen and click Control Panel on the Apps screen.
2. If “View by:” is set to “Category”, click “Uninstall a program” under the “Program” item. If “View by:” is set to “Large icons” or “Small icons”, click “Programs and Features”.
 3. Select and double-click “TASCAM US-1x2 version x.xx” in the list.
 4. Then, follow the instructions that appear on the screen.

Uninstalling the Mac dedicated software

Delete “US-1x2_SettingsPanel” from the Applications folder to complete uninstallation.

4 – Preparation

Connecting the power

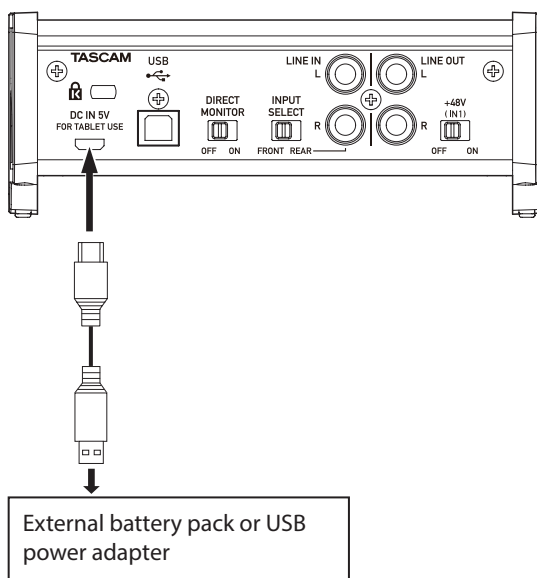
When using a computer (Windows/Mac)

Normally, when this unit is connected to a computer, it will operate using USB bus power, so connecting a separate power supply device is not necessary.

When using an iOS device

When this unit is connected to an iOS device, connecting an external battery, USB power adapter or other power supply device is necessary in order to power the unit.

Connect an AC adapter (TASCAM PS-P520E), external battery pack (TASCAM BP-6AA) or the genuine Apple USB power adapter included with the iPad/iPhone to a USB cable (sold separately), and connect it to the **DC IN 5V** port.



CAUTION

- No USB power adapter is included with an iPod touch. To use it with an iPod touch, purchase a genuine Apple USB power adapter (that can supply 5 V and a current of at least 700 mA) separately.
- Operation with other external battery packs and USB power adapters is possible, but we strongly recommend using a TASCAM PS-P520E AC adapter, TASCAM BP-6AA external battery pack or the genuine Apple USB power adapter included with the iPad/iPhone.

When using another external battery pack or USB power adapter, be sure that the power supply device meets the following specifications.

- Supplied voltage: 5 V
- Supplied current: 700 mA or more

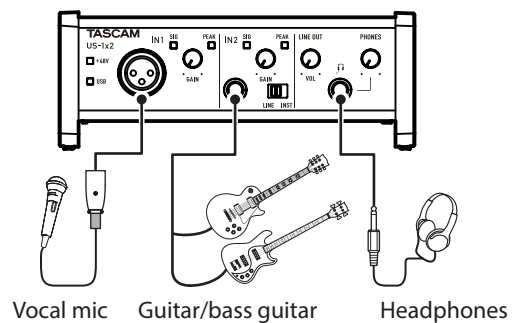
Using a power supply device when the specifications are other than the above could cause malfunction, overheating, fire or other problems. If anything abnormal occurs, stop use and contact the retailer where you purchased the unit or a TASCAM customer support service to request repair.

Connecting other equipment

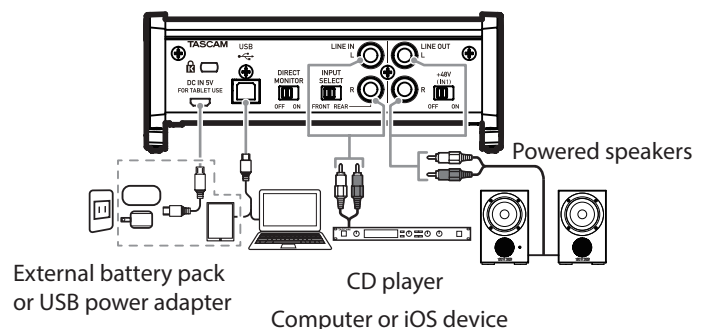
This is an example of connections.

Precautions before making connections

- Carefully read the operation manuals of the devices to be connected and then connect them correctly.
- Before making connections, turn this unit and all equipment to be connected off (standby).
- If possible, install all connected devices so that they are powered from the same AC power supply line. When using a power strip or similar device, be sure to use one that has high current capacity in order to minimize voltage fluctuations in the AC power supply.



Example (front)



Example (back)

- * Note: When using an iOS device, you must also connect an external battery pack or USB power supply to assure power.

Connecting with a computer

Use the included USB cable to connect the unit to a computer USB 3.0/2.0 port. When the USB connection is working, the **USB** indicator on the front of the unit lights.

CAUTION

If you connect this unit to a computer via a USB hub, for example, audio signal dropouts, clicking noises and other interference could occur due to the influence of other USB devices connected to that hub. For this reason, we strongly recommend connecting this unit to a separate USB port. Connecting USB keyboards and mice, however, to the same bus should not be a problem.

4 – Preparation

Connecting with iOS devices

You will need a Lightning to USB Camera Adapter and the USB cable included with this unit to connect an iOS device.

Audio connections

Analog audio signals input into this device from mics, guitars, keyboards and other audio equipment can be converted into digital signals and transmitted to the computer via USB. In addition, by connecting speakers (through an amplifier if not powered) or headphones to this unit, you can monitor audio signals that are input to this unit and output from the computer.

CAUTION

Before connecting audio equipment, set the **GAIN**, **LINE OUT** and **PHONES** knobs to their lowest values. Failure to do so could cause sudden loud noises from monitoring equipment, and this could damage the equipment or harm hearing.

Microphones

Dynamic mics

Connect these to the **IN1** jack on the front of the unit.

Condenser mics

When using a condenser mic that requires phantom power, connect it to the **IN1** jack on the front of the unit, and set the **+48V** switch to **ON**.

When the **+48V** switch is set to **ON**, the **+48V** indicator on the front of the unit lights.

CAUTION

- Before making connections, turn this unit and all equipment to be connected off (standby).
- Do not turn phantom power on when connecting a mic that does not require phantom power.
- Set the phantom power switch to +48V only when using a condenser microphone that requires phantom power. Turning phantom power +48V when a dynamic mic or other mic that does not require it is connected could damage this unit and connected equipment.
- Do not connect or disconnect mics while phantom power is on. Doing so could cause a loud noise and might damage this unit and connected equipment.
- Set the **LINE OUT** and **PHONES** knobs to their minimum values before turning phantom power on/off. Depending on the connected mics, sudden loud noises from monitoring equipment could occur, and this could damage the equipment or harm hearing.
- Supplying phantom power to some ribbon mics will break them. If you are unsure, do not supply phantom power to a ribbon mic.

Guitar

When connecting a guitar or bass guitar directly to this unit, use the **IN2** jack on the front of the unit and set the **LINE/INST** switch to **INST**.

Electronic instruments and other audio equipment

When connecting an electronic instrument or other audio equipment directly to this unit, use the **IN2** jack on the front of the unit or the **LINE IN L-R** jacks on the back. When connecting to the **IN2** jack, set the **INPUT SELECT** switch to **FRONT** and the **LINE/INST** switch to **LINE**. When connecting to the **LINE IN L-R** jacks, set the **INPUT SELECT** switch to **REAR**.

Analog record players

The output of an analog record player cannot be connected directly to this unit. To connect an analog record player to this unit, a phono amp and equalizer (or an audio amplifier that has phono input jacks) must be connected between them.

Monitor speakers

Connect monitor speakers (powered speakers or an amplifier and speaker system) to the **LINE OUT** jacks on the back of the unit.

Use the **LINE OUT** knob on the front of the unit to adjust the speaker volume.

Headphones

Connect headphones to the **PHONES** jack (standard stereo) on the front of the unit.

CAUTION

Before connecting headphones, minimize the volume with the **PHONES** knob. Failure to do so might cause sudden loud noises, which could harm your hearing or result in other trouble.

Adjusting the monitoring balance

Adjust the monitoring balance between the input signals from this unit's input jacks and the output signals from the computer. Use the **DIRECT MONITOR** switch on the back of the unit and the Settings Panel "*Input Volume*" item to adjust the balance.

DIRECT MONITOR switch setting (on back of unit)	Input Volume setting (Settings Panel)	Monitoring balance ratio	
		Unit input	Computer
OFF	-----	100	
ON	Low	30	70
	Mid	50	50
	High	70	30
(Standalone mode)	-----	100	

5 – Using the Settings Panel

Opening the Settings Panel

You can use the Settings Panel to make settings for the various functions of this unit.

You can open the Settings Panel in the following ways.

Windows

Windows 10

- Click the Windows Start button, select **"All Apps"** and then select **"US-1x2 Settings Panel"** under **"TASCAM"**.

Windows 8.1

- Right-click the Windows Start button and select Control Panel.

NOTE

You can also left-click the Start button to open the Start screen. Then, click the  button to open the Apps screen, and select **"US-1x2 Settings Panel"** under **"TASCAM"**.

Windows 7

- Click the Windows Start button, select **"All Programs"** and then select **"US-1x2 Settings Panel"** under **"TASCAM"**.

Mac

- Using the **"Finder"**, open the **"Applications"** folder and click **"US-1x2_SettingsPanel"** to open the Settings Panel.
- In the **"Audio Devices"** window of the **"Audio MIDI Setup"** application, right-click (control-click) **"US-1x2"** (or click the settings icon when the unit name is selected) and click **"Configure device..."** to open the Settings Panel.

Windows Settings Panel overview

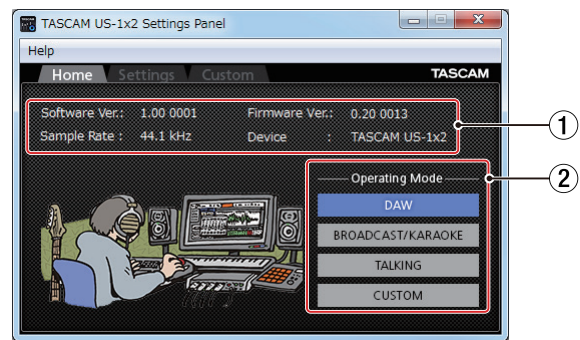
The Windows Settings Panel has three pages. Click a tab at the top of the Settings Panel to open that page.

Home: This page shows a variety of information and allows the selection of presets suitable for specific operations.

Settings: Make detailed settings for the US-1x2 on this page.

Custom: Make software mixer settings.

Home page



① Status display area

This shows the current status of the software.

Item displayed	Meaning
<i>Software Ver.</i>	This is the software version.
<i>Sample Rate</i>	This shows the sampling frequency.
<i>Firmware Ver.</i>	This is the firmware version used by the connected unit.
<i>Device</i>	This is the name of the connected unit. ("No Device" is shown when no device is connected.)

② Operating Mode

This selects the operation mode of the unit.

Options

DAW

Select this when using DAW software, as well as when you do not need **"BROADCAST/KARAOKE"** mode (for live broadcasting or karaoke applications).

BROADCAST/KARAOKE

Select this for live broadcasting, karaoke and similar applications.

This preset enables the loopback function. It mixes the sound output from the computer with the sounds input through the **IN1**, **IN2** and **LINE IN L-R** jacks on the unit and sends the mix back to the computer.

TALKING

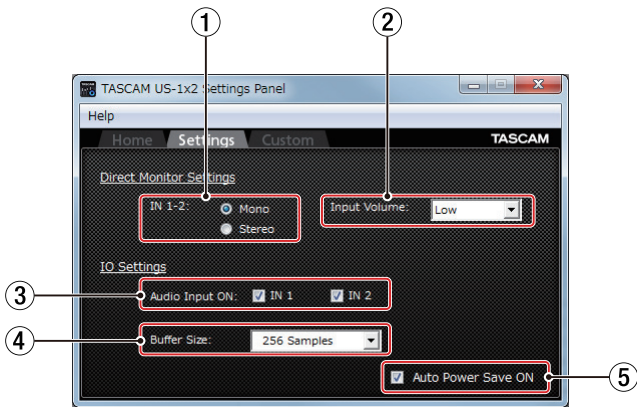
Select this for voice calling and similar applications.

This preset disables the loopback function. The sound output from the computer (including received voices and music playing on the computer) is not sent back to the computer.

CUSTOM

Select this to use the settings made on the **"Custom"** page.

Settings page



① Direct Monitor Settings IN 1-2

Set the monitoring signal for the **IN1**, **IN2** and **LINE IN L-R** jacks to **"Mono"** or **"Stereo"**.

- When set to **"Mono"**
Stereo signals sent to the computer remain unchanged, but are output as mono signals from the **LINE OUT** and **PHONES** jacks.
- When set to **"Stereo"**
Stereo signals sent to the computer remain unchanged, and are output as stereo signals from the **LINE OUT** and **PHONES** jacks.

② Input Volume

Use this to adjust the monitoring balance between the input signals from this unit's input jacks and the output signals from the computer.

Options

Low / Mid / High

See "Adjusting the monitoring balance" on page 11 for details about options.

③ Audio Input ON

Turn input on/off for each input separately.

- Turn an input on by putting a check in its checkbox. When an input is on, signals on that channel will be input.
- Turn an input off by removing the check from its checkbox. When an input is off, signals on that channel will not be input.

④ Buffer Size item (Windows Only)

Set the size of the buffer used when audio input and output signals are transferred to and from the computer. Smaller buffer sizes result in less audio signal delay (latency), but require high-speed processing by the computer.

If the processing cannot keep up, for example, due to other system operations, clicking and popping noises might occur and the audio signal might even drop out.

Increasing the buffer size will stabilize operation and suppress negative effects on audio signals, but the delay in audio signals sent to the computer will increase.

You can adjust the buffer size according to the use conditions.

Options

64, 128, 256, 512, 1024 or 2048 samples

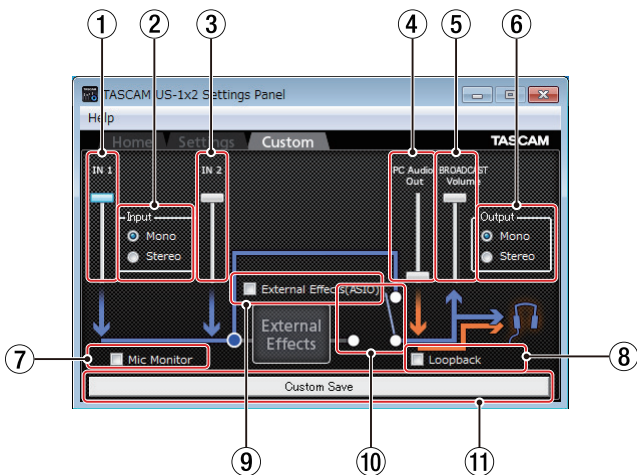
⑤ Auto Power Save ON

When this setting is on, if operating in standalone mode and no input signal (above -60 dBFS) has been detected for 30 minutes, the unit will turn itself off (start standby) automatically.

- Putting a check in the checkbox will turn the automatic power saving function on so the unit will automatically turn off (enter standby mode).
- Removing the check in the checkbox will turn the automatic power saving function off.

5 – Using the Settings Panel

Custom page



① IN 1 volume slider

Use to adjust the volume input through the unit's IN1 jack.

② Input selection

Use to set whether the input signal is handled as "Mono" or "Stereo".

Options

Mono

When using one mic (connected to the IN1 jack), it will be treated as input from both "IN 1" and "IN 2".

The audio from "IN 1" will be heard from both left and right headphone channels.

In most circumstances, select this when using a mic for a live broadcast, for example.

Stereo

Even when using one mic (connected to the IN1 jack), it will not be treated as being input from both "IN 1" and "IN 2".

It will be treated as only being input from "IN 1".

The audio from "IN 1" will be heard from the left headphone channel, and audio from "IN 2" will be heard from the right headphone channel.

Use this if a keyboard or other stereo audio sources is being input for live broadcasting or karaoke.

NOTE

When DAW mode is selected, if set to "Mono", this will automatically be switched to "Stereo".

③ IN 2 volume slider

Use to adjust the volume input through the unit's IN2 jack.

④ PC Audio Out volume slider

Use to adjust the playback volume of Windows Media Player and karaoke apps.

⑤ BROADCAST Volume slider

Use to adjust the playback volume of Sound Recorder and karaoke apps. Use this also to adjust the broadcast volume with live broadcast apps.

NOTE

Double-click a volume slider to reset it to its default value.

⑥ Output

Use to set whether the output signal is handled as "Mono" or "Stereo".

Options

Mono

Only the audio from the left side can be handled when using some applications. When using an application like this, audio from the right side cannot be transmitted or recorded.

Set to "Mono" to mix both left and right signals to mono and transmit that sound to the computer.

Stereo

Set when the application being used supports stereo.

When set to "Stereo", a stereo sound can be transmitted to the computer.

NOTE

When set to "Mono", all stereo input signals will be converted to mono. This setting receives priority even if the "Input" selection (②) is set to "Stereo" for mic input.

⑦ Mic Monitor selection

If the "Mic Monitor" checkbox has a check, sounds from mic and other input will be mixed with the "PC Audio Out" signal and looped back to the computer.

If the check is removed from the "Mic Monitor" checkbox, sounds from mic and other sources input through IN 1 and IN 2 will not be sent to the headphone output.

⑧ Loopback selection

If the "Loopback" checkbox has a check, the sound from the computer will be broadcast and output from the PHONES jack.

If the check is removed from the "Loopback" checkbox, the sound from the computer will only be output from the PHONES jack.

⑨ External Effects (ASIO)

To use an echo on mics and other signals input to the unit by using an external effect, check the "External Effects (ASIO)" checkbox.

CAUTION

Depending on the broadcast software settings, the signal could loop and cause feedback.

NOTE

Even if you have removed the check from the "External Effects (ASIO)" checkbox, the check will automatically be added when you select DAW mode.

⑩ External Effects switch

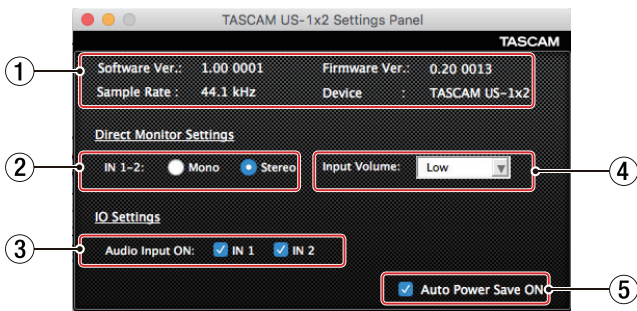
When a check is in the "External Effects (ASIO)" checkbox, this switch will be set to the "External Effects" side and light.

⑪ Custom Save

Click to save the "Custom" page settings.

You can use these settings when the "Operating Mode" item is set to "Custom" on the "Home" page.

Mac Settings Panel overview



① Status display area

This shows the current status of the software.

Item displayed	Meaning
<i>Software Ver.</i>	This is the software version.
<i>Sample Rate</i>	This shows the sampling frequency.
<i>Firmware Ver.</i>	This is the firmware version used by the connected unit.
<i>Device</i>	This is the name of the connected unit. ("No Device" is shown when no device is connected.)

② Direct Monitor Settings

Set the monitoring signal for the **IN1/IN2/LINE IN L-R** jacks to "Mono" or "Stereo".

- When set to "Mono"
Stereo signals sent to the computer remain unchanged, but are output as mono signals from the **LINE OUT** and **PHONES** jacks.
- When set to "Stereo"
Stereo signals sent to the computer remain unchanged, and are output as stereo signals from the **LINE OUT** and **PHONES** jacks.

③ Audio Input ON

Turn input on/off for each channel separately.

- Turn an input on by putting a check in its checkbox. When an input is on, signals on that channel will be input.
- Turn an input off by removing the check from its checkbox. When an input is off, signals on that channel will not be input.

④ Input Volume

Use this to adjust the monitoring balance between the input signals from this unit's input jacks and the output signals from the computer.

Options

Low / Mid / High

See "Adjusting the monitoring balance" on page 11 for details about options.

⑤ Auto Power Save ON

When this setting is on, if operating in standalone mode and no input signal (above -60 dBFS) has been detected for 30 minutes, the unit will turn itself off (start standby) automatically.

- Putting a check in the checkbox will turn the automatic power saving function on so the unit will automatically turn off (enter standby mode).
- Removing the check in the checkbox will turn the automatic power saving function off.

5 – Using the Settings Panel

Notification function

If the computer you are using is connected to the Internet, notifications might appear when the Settings Panel is launched.

NOTE

Put a check in the *“Do not show the same message again”* checkbox to prevent the same message from being shown the next time it is launched.

Automatic Settings Panel and firmware update function

If the computer you are using is connected to the Internet, when a new version of the Settings Panel or the firmware is released, a notification about automatic updating will appear when the Settings Panel is launched.



Settings Panel update notification



Firmware update notification

Click the *“Update now”* button if you want to use the latest version of the Settings Panel or firmware.

The file will be downloaded automatically in the update software will launch.

Click the *“Update later”* button to close the update window if you do not want to update or want to update later.

NOTE

- Put a check in the *“Do not show the same message again”* checkbox to prevent the same window from being shown the next time it is launched.
- After closing the update window, you can reopen it by selecting Help → Update from the menu.

6 – Application Guide

In this chapter, we explain how to set some audio applications for use with this unit.

DAW software

Bundled DAW software

Download quickstart guides for the bundled DAW software from the TEAC Global Site (<http://teac-global.com/>), and refer to them for instructions about downloading, installing and making settings in these applications.

Other DAW software

When using any other DAW software, consult its operation manual.

Driver settings for specific purposes (Windows only)

	ASIO driver set with DAW software or other application	Sound default device
Using a DAW or other application primarily for recording (This ignores the “Home” page “Operating Mode” setting.)	US-1x2 ASIO	US-1x2
Using a DAW or other application primarily for playback (“Home” page “Operating Mode” set to DAW.)		
Using for live broadcast or karaoke (“Home” page “Operating Mode” set to BROADCAST/KARAOKE.)	US-1x2 Mixing Driver	Mixing Driver 1 for US-1x2
Using a voice communication app, for example (“Home” page “Operating Mode” set to TALK.)		

* This might improve performance depending on the operating conditions.

NOTE

“Mixing Driver 1 for US-1x2” is compatible with major communication apps. If you do not want “Mixing Driver 1 for US-1x2” to appear, right-click it to open the menu, select “Disable” and uncheck “Show Disabled Devices”.

Windows Media Player

1. Open the OS Control Panel.

NOTE

Follow these procedures to open the Control Panel.

Windows 10/Windows 8.1

Right-click the Windows Start button, and select “Control Panel”.

Windows 7

Left-click the Windows Start button, and select “Control Panel” in the Start menu.

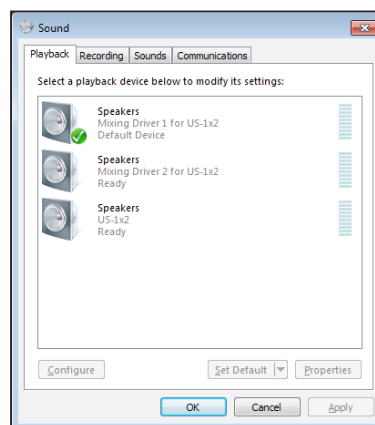
2. Double-click “Sound” in the Control Panel.

NOTE

If the Control Panel is set to be viewed as icons, a “Sound” icon will appear.

3. On the “Playback” page, right-click “US-1x2” or “Mixing Driver 1 for US-1x2”, and click “Set as Default Device” in the pop-up menu that appears.

When you do this, the green check mark appears next to the selected device.



Windows 7 screen

NOTE

To use the unit as a recording device, set the default device according to the ASIO device being used on the “Recording” tab in the same manner as on the “Playback” tab.

4. After completing the setting, click the “OK” button.
5. Start Windows Media Player, select an audio file and begin playback.

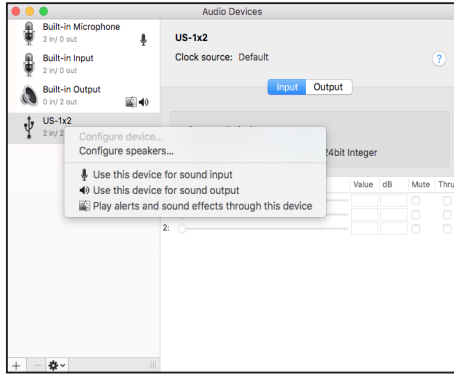
NOTE

- If you change the setting while Windows Media Player is running, the software will not recognize that the device has been changed. In this case, restart Windows Media Player.
- If you still cannot hear sound after making the settings and completing the procedures above, restart the computer.
- If you make this setting, sound will be output through this unit, but no sound will be output from the computer’s speakers or headphone jack.

6 – Application Guide

Mac OS X and iTunes

1. Open the Utilities folder within the *“Applications folder”*, and double-click *“Audio MIDI Setup”*. Then open the *“Audio Devices”* window.
2. Click *“US-1x2”* to select it and right-click or control-click it. Then, click *“Use this device for sound output”* in the pop-up menu.
The speaker mark appears next to *“US-1x2”*.



NOTE

To use this device as the recording device, select *“Use this device for sound input”* for the *“US-1x2”*.

3. Launch iTunes, select an audio file and start playback.

Overview

- This unit will operate in standalone mode if it is turned on when it is not connected to a computer by USB.
- You can use this unit as a mic preamp and to monitor input signals. This function is convenient when you want to practice an instrument without recording, for example.
- An external power supply device is necessary. See “Connecting the power” on page 9 for details.

Settings in standalone mode

When operating in standalone mode, input signals pass-through the built-in digital mixer and output selector, which are set at fixed values, and are output from the output jacks. In addition, when operating in standalone mode, the **USB** indicator will blink.

Settings Panel settings

The current (most recently made) settings are retained for the following items on the Settings Panel.

- *Direct Monitor Settings IN 1-2*
- *Input Volume**
- *Audio Input ON*
- *Auto Power Save*

* When operating in standalone mode, only the input signals can be monitored, regardless of the “*Input Volume*” setting. For details, see “② *Input Volume*” in “Settings page” on page 13.

8 – Troubleshooting

Please read this chapter if you are unable to use the unit properly even after setting it up following the procedures in this manual. If you are still unable to resolve your problems please contact the store where you purchased this unit or TASCAM customer support service with the following information about the operating environment and details about the trouble.

Operating environment

- Computer manufacturer :
- Model:
- CPU:
- Memory (RAM):
- Operating system:
- Applications used:
- Antivirus software:
- Wireless LAN use:

See the end of this document for contact information.

I cannot install the dedicated software

1. Check the operating system
The operating system being used might not be compatible with the software that you are trying to install. Check the compatible operating system of the software you are trying to install again.
2. Stop software running in the background
Antivirus software and other software that runs in the background can prevent installation. Quit software that runs in the background and try installation again.

The unit is connected, but the computer does not recognize it.

1. Install the dedicated software
 - Install the dedicated software. See "Installing the dedicated software" on page 5 for details.
2. Change the USB port
 - This unit cannot be used with USB 1.1. Use a USB 2.0 or USB 3.0 port.
 - Do not use a USB hub with this unit. Always connect the unit directly to a USB port on the computer.
 - If the above methods do not resolve the problem, connect the unit to a different USB port on the computer.

I cannot hear any sound even when audio is played back on the computer.

Check the status of the unit's connection with the computer. Moreover, if you make the following settings, sound will be output through this unit, but no sound will be output by the computer's speakers or headphone jack.

Windows

See the "Windows Media Player" section of "6 – Application Guide" on page 17 in this manual, and make settings as necessary for the OS.

Mac

1. Quit all applications and open "System Preferences..." from the Apple menu.
2. Open "Sound".
3. On the Output tab, select "US-1x2".

After completing the setting, restart the computer and check the sound of playback. Depending on the application that you are using, you might need to make additional device settings.

In particular, DAW software operates using audio engines with settings that are different from the OS settings, so confirm the DAW driver settings first after installing the software for this unit. Please see the manuals for the applications that you are using for detailed setting procedures.

Sound breaks up or there is noise.

The processing load on the computer causes sound to break up and noise to occur.

Here are some methods to reduce the load on the computer.

1. A wireless LAN and software running in the background, including antivirus software, regularly put processing loads on the computer, which can cause sound to break up and other noise.
Stop wireless LAN transmission, antivirus software and other software running in the background when using this unit.
2. Set the buffer size (latency) in the audio application that you are using or in this unit's Settings Panel to a larger value. (Windows only)

NOTE

Consult the maker of the audio application that you are using for methods to reduce its load on your computer.

3. Change the settings of your computer so that they are optimal for audio processing.

Using Windows

● Performance Options

- ① Open the **“Control Panel”** using the procedures for the OS (Windows 10/Windows 8.1/Windows 7) you are using.
 - In Windows 10, click **“Control Panel”** from the Windows Start button to open the Control Panel. Then, click the **“System”** icon.
 - In Windows 8.1, right-click the ordinary Start screen (Metro user interface screen) and then click **“All apps”**. Then, right-click **“Computer”** and select **“Properties”**.
 - In Windows 7, right-click **“Computer”** from the Windows Start button, and select **“Properties”**.
- ② Click **“Advanced system settings”**.
- ③ Click **“Settings”** in the **“Performance”** section of the **“Advanced”** tab of the **“System Properties”** window.
- ④ In the **“Visual Effects”** tab of the **“Performance Options”** window, select **“Adjust for best performance”**.

● Power Options

- ① Open the **“Control Panel”** using the procedures for the OS (Windows 10/Windows 8.1/Windows 7).
- ② Click **“Hardware and Sound”**
- ③ Click **“Power Options”**
- ④ Click **“Show Additional Plans”**
- ⑤ Click on **“High Performance”** in the Power Options

NOTE

If an item is not shown, select the **“Show Additional Plans”** downward triangular button.

Using Mac

- ① Open **“System Preferences...”** from the Apple menu, and select **“Energy Saver”**.
- ② Set **“Computer sleep”** to **“Never”**.
- ③ Set **“Display sleep”** to **“Never”**.

NOTE

Depending on the Mac OS version and Macintosh computer model, this setting might not be available.

Support for Bundled DAW Software

TASCAM does not provide end-user support for the bundled DAW Software.

Please check the Help menu of the installed software to find where this support is available.

9 – Specifications

Audio resolution

Sampling frequencies

44.1, 48, 88.2, 96 kHz

Quantization bit depth

16/24-bit

Input/output ratings

Analog inputs

IN 1 input

Mic input (Balanced)

Connector: XLR-3-31 equivalent (1: GND, 2: HOT, 3: COLD)

Input impedance: 2.4 k Ω

Rated input level: -65 dBu (0.0004 Vrms)

(GAIN knob at MAX)

Rated input level: -8 dBu (0.3090 Vrms)

(GAIN knob at MIN)

Maximum input level: +8 dBu (1.9467 Vrms)

Gain range: 57dB

IN 2 input

LINE/INST input (Balanced/Unbalanced)

Connector: 6.3mm (1/4") standard TRS stereo jack

(Tip: HOT, Ring: COLD, Sleeve: GND)

Gain range : 45dB

LINE input (Balanced)

(LINE/INST switch set to LINE)

Input impedance: 10 k Ω

Rated input level: -41 dBu (0.0069 Vrms)

(GAIN knob at MAX)

Rated input level: +4 dBu (1.228 Vrms)

(GAIN knob at MIN)

Maximum input level: +20 dBu (7.75 Vrms)

INST input (Unbalanced)

(LINE/INST switch set to INST)

Input impedance: 1M Ω or more

Rated input level: -58 dBV (0.0013 Vrms)

(GAIN knob at MAX)

Rated input level: -13 dBV (0.2239 Vrms)

(GAIN knob at MIN)

Maximum input level: +3 dBV (1.4125 Vrms)

LINE L/R inputs (Unbalanced)

Connectors: RCA pin jacks

Input impedance: 10 k Ω

Maximum input level: +6 dBV (1.9953 Vrms)

Analog audio output ratings

LINE OUT L-R outputs (Unbalanced)

Connectors: RCA pin jacks

Output impedance: 100 Ω

Nominal output level: -10 dBV (0.316 Vrms)

Maximum output level: +6 dBV (1.995 Vrms)

Headphones output (PHONES)

Connector: 6.3mm (1/4") standard stereo jack

Maximum output: 18mW + 18mW or higher

(THD+N 0.1% or less, into 32 Ω load)

Control input/output ratings

USB

Connector: 4-pin USB B-type

Transfer rate: USB 2.0 High Speed (480 Mbps)

DC IN 5V

Connector: USB Micro B type

Audio performance

Mic preamp EIN (equivalent input noise)

-127 dBu or less (150 Ω termination with gain knob at MAX)

Frequency response

IN 1-IN 2 to LINE OUT L-R, PHONES

44.1 kHz, 48 kHz

20Hz: +0 dB/-0.5 dB (JEITA)

20kHz: +0 dB/-0.5 dB (JEITA)

20kHz: +0dB/-1.0dB (PHONES output, JEITA)

88.2kHz and 96kHz

20Hz: +0 dB/-0.5 dB (JEITA)

40kHz: +0 dB/-1.0 dB (JEITA)

40kHz: +0dB/-3.0dB (PHONES output, JEITA)

S/N ratio

100 dB or more (22 kHz LPF + A-Weight)

(when LINE input to LINE OUT and gain knob at MIN in stand-alone mode*) (JEITA)

Distortion

0.006% or less

(when LINE input to LINE OUT in standalone mode* for 1 kHz sine wave at rated input and maximum output levels) (JEITA)

Crosstalk

95 dB or more

(when LINE input to LINE OUT in standalone mode* for 1 kHz sine wave) (JEITA)

* When this unit is turned on and is not connected to a computer by USB

Computer system requirements

Check the TEAC Global Site (<http://teac-global.com/>) for the latest information about supported operating systems.

Windows

Supported operating systems

Windows 10 32-bit
 Windows 10 64-bit
 Windows 8.1 32-bit
 Windows 8.1 64-bit
 Windows 7 32-bit SP1 or later
 Windows 7 64-bit SP1 or later
 (Windows 8, Windows Vista and Windows XP are not supported)

Computer hardware requirements

Windows computer with a USB 2.0 port

CPU/processor speed

2 GHz or faster dual core processor (x86)

Memory

2 GB or more

CAUTION

Operation of this unit was confirmed using standard computers that meet the above requirements. This does not guarantee operation with all computers that meet the above requirements. Even computers that meet the same system requirements might have processing capabilities that differ according to their settings and other operating conditions.

Mac

Supported operating systems

macOS Sierra (10.12 or later)
 OS X El Capitan (10.11 or later)
 OS X Yosemite (10.10 or later)

Computer hardware requirements

Mac with a USB 2.0 port

CPU/processor speed

2 GHz or faster dual core processor

Memory

2 GB or more

Apple iOS devices

Apple iOS device running iOS 7 or later

Supported audio drivers

Windows: ASIO2.0, WDM
 Mac: Core Audio
 iOS device: Core Audio for iPhone

General

Power

Used with a computer

USB bus power

Used with an iOS device

USB power adapter: (that can supply 5 V and a current of at least 700 mA)(*1)

External battery pack: (that can supply 5 V and a current of at least 700 mA)(*2)

*1 We strongly recommend using TASCAM PS-P520E AC adapter or the USB power adapter included with the iPad/iPhone. No USB power adapter is included with an iPod touch. To use it with an iPod touch, purchase a genuine Apple USB power adapter (that can supply 5 V and a current of at least 700 mA) separately.

*2 We strongly recommend using a TASCAM BP-6AA external battery pack. If using another external battery pack or mobile battery, purchase one that can supply 5 V and a current of at least 700 mA.

Power consumption

2.5W

External dimensions (width × height × depth)

146 × 55 × 120 mm

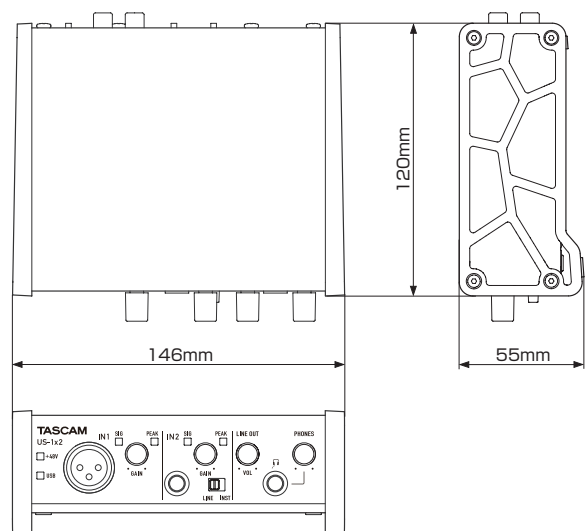
Weight

623g

Operating temperature range

5–35 °C

Dimensional drawings



- Illustrations in this manual might differ in part from the actual product.
- Specifications and external appearance might be changed without notification to improve the product.

TASCAM

TEAC CORPORATION

Phone: +81-42-356-9143
1-47 Ochiai, Tama-shi, Tokyo 206-8530 Japan

<https://tascam.jp/jp/>

TEAC AMERICA, INC.

Phone: +1-323-726-0303
1834 Gage Road, Montebello, California 90640 USA

<http://tascam.com/>

TEAC UK Ltd.

Phone: +44-8451-302511
2 Huxley Road, Surrey Research Park, Guildford, GU2 7RE, United Kingdom

<http://tascam.eu/>

TEAC EUROPE GmbH

Phone: +49-611-71580
Bahnstrasse 12, 65205 Wiesbaden-Erbenheim, Germany

<http://tascam.eu/>

TEAC SALES & TRADING(SHENZHEN) CO., LTD

Phone: +86-755-88311561~2
Room 817, Block A, Hailrun Complex, 6021 Shennan Blvd., Futian District, Shenzhen 518040, China

<http://tascam.cn/>
